

NorthEast Monitoring, Inc.

advancing Holter technology™

DR181 Digital Holter Recorder, 12-lead

Meets EC11
& EC-38
standards



Ergonomic
design



Proven
reliability



Maximize
Holter
reimbursements



Reduce artifact
with shielded
cables



Pacemaker
detection
standard



Foreign
language
interfaces



Industry-leading
3-year warranty



The DR181 is the latest version of the reliable and popular DR180 series. The DR181 in a 12-lead configuration provides a high quality research and clinical evaluation tool. It records 12-lead / 9 channels of data – no short-cuts! Our 12-lead system does not use arithmetically derived or reconstructed data from non-standard Holter lead hook-ups. These short-cut methods may capture accurate data for normal beats, but the picture degrades sharply for virtually all morphologies of interest. The unit can also be used with 5- or 7-lead patient cables for other applications.

The DR181 12-lead settings can be adjusted to fit your 12-lead recording requirements. Intervals and strip lengths are adjustable, and you can also choose to record continuously in all 12-leads at a resolution of 12 bits per sample.

A number of key features make our recorders the quality and technology leaders in the industry today. Contact NorthEast or read on for more details.



"...the Gold Standard for our laboratory, ...used in over 200 clinical sites world-wide for continuous monitoring research in acute MI patients."

*Mitchell W. Krucoff, M.D., F.A.C.C.
Associate Professor Medicine/Cardiology, Duke University Medical Center
Director, Static & Continuous ECG Core Laboratory, Duke Clinical Research Institute*

DR 181 12-Lead Features

◆ Meets EC-11 and EC-38 standards

Meets applicable sections of ANSI/AAMI EC11-1991 "Diagnostic Electrocardiographic Devices" and ANSI/AAMI EC38-1994 "Ambulatory Electrocardiographs."

◆ Ergonomic design

Large, easy view screen and soft-keys make the unit exceptionally easy to use. The large Event marker button operates in conjunction with interactive and customizable patient diary via user-programmable soft-keys.

◆ Proven reliability

Thousands of Holter units are in use worldwide. Real-world experience is designed into every unit.

◆ Maximize Holter reimbursements

Our system allows your office to "capture" reimbursement for all applicable CPT (Current Procedural Terminology) codes for Holter. Removable digital storage memory (compact flash) allows rapid re-deployment of the unit to the next patient.

◆ Reduce artifact with shielded cables

Shielded cables provide better signal integrity and noise immunity. Our cables are carefully shielded and impedance matched and provide better SNR than any other cable on the market.

◆ Pacemaker detection standard

The conflicting requirements for signal sensitivity (wide bandwidth and high sample rate) and long battery life have been uniquely resolved to provide highly accurate diagnostic information.

◆ Foreign language interfaces

Multiple foreign languages are programmed into each unit to suit diverse patient populations. Currently support Danish, English, Finnish, French, German, Italian, Polish, Portuguese, Spanish and Turkish.

◆ Industry-leading 3-year warranty

These units are built-to-last. Our field return rate is proven to be so low that we can offer the industry's longest warranty -- and then extend that to 5 or more years to add even more value to your investment.

◆ Cable options

May be used with Oxymetry (oxy plus 5-lead), 5-lead, or 7-lead or 12-lead cables.

◆ Maximize good quality recording cycles

Checks battery state, lead hook-up quality, date and patient ID on LCD prior to deployment. No mix-ups with patient data because patient ID is encoded on memory card.

◆ All digital recording

Reliable digital technology is used throughout, enhancing service life and lowering total cost of ownership..

◆ Pediatric (high sensitivity mode)

High resolution modes can be selected for pediatric patients.

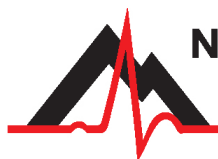
◆ Compatible with NorthEast Holter LX® Analysis software

The DR181 in either OxyHolter (this includes analysis for OSA, i.e., Sleep) or the 12-lead mode requires v5.4b or newer version of Holter LX Analysis. 3-channel recording mode is compatible with v5.2 or newer version of Holter LX Analysis.

510(k)K001288

NB: In the U.S.A., Federal Law restricts devices to sale by or on the order of a physician. For in vitro diagnostic use. Not intended to replace real-time telemetry monitoring for patients suspected of having life-threatening arrhythmias.

January 2015

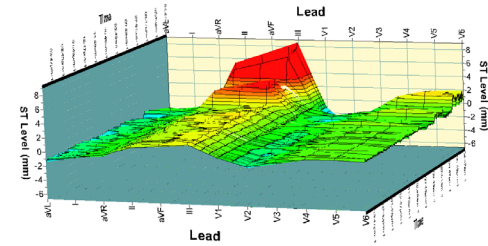


advancing Holter technology

NorthEast Monitoring, Inc.

141 Parker Street, Suite 111
Maynard, MA 01754 USA
www.nemon.com

phone: [+1] 978-461-3992
fax: [+1] 978-461-5991
toll free USA: 866-346-5837
email: info@nemon.com



ST levels in 12-lead plot

DR181 Digital Recorder Specifications

Recording duration:

72 hours, with lithium batteries
48 hours, with alkaline batteries
24 hours, with rechargeable batteries

Recording bandwidth:

0.05 - 70 Hz in 3-channel mode
0.05 - 150 Hz in 12-lead mode

Resolution:

12-bit, 12.50 µV/LSB in 3-channel mode
12-bit, 6.25 µV/LSB in 12-lead mode

Prefilter sampling rate:

1440 samples/second in 3-channel mode
1440 samples/second in 12-lead mode

Dimensions:

12.3 cm x 7.0 cm x 2.4 cm
(4-7/8 in x 2-3/4 in x 1.0 in)

Weight:

184 grams (6.5 oz.), including batteries and SD card
136 grams (4.8 oz.), without batteries

Power:

2 AA batteries: alkaline, rechargeable or lithium

Storage capacity:

32 MB - 2 GB SD flashcard

12-lead settings:

Intervals from 15 seconds to 5 minutes.
Length between 3 and 60 seconds
Continuous: all 12-leads/9 channels recorded.

Distributed by: