

HE/LX[®] (Holter) Analysis Software

Enhanced
AFib Analysis



Four software
levels



Up to 14-day
analysis



User friendly
editing / GUI



Customizable
criteria & reports



Flexible
Licensing
Options



LX Remote
& Wireless
capabilities



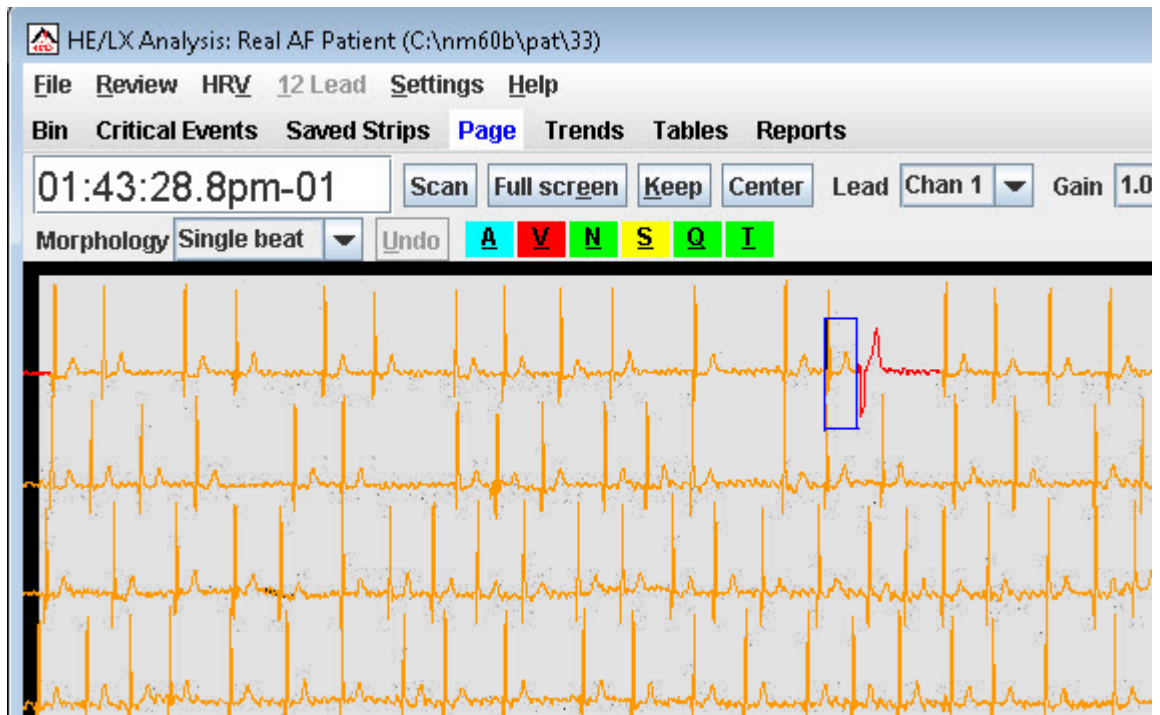
Fastest and
most accurate
time-to-report



Import data
from
non-NEMon
Holters



Industry-
leading 3-year
warranty



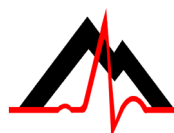
Enhanced AFib beat detection and analysis available in Pro and Enhanced Plus software levels.

- The HE/LX[®] (Holter) Analysis Software comes in four levels of functionality: Basic, Enhanced, Enhanced Plus, and Pro. Each software level is tailored to address the various needs of our diverse user community.
- The software and efficient file structure on which it is built offers the doctor's office, the scanning service, and the most demanding cardiac practice, the fastest and most user-friendly environment to reduce the time spent in producing intuitive and accurate patient results.
- This world class software supports network environments and remote off-site office connectivity.
- A number of proprietary features make this software unique and the most productive and highly regarded in clinical and diagnostic communities.
- Contact NorthEast for an informative demo of HE/LX[®] Analysis software via the Internet. Sit back, relax, and let our technical professionals show you beat-by-beat how to best use the software.

"...the Gold Standard for our laboratory, ... used in over 200 clinical sites world-wide for continuous monitoring research in acute MI patients."

Mitchell W. Krucoff, M.D., F.A.C.C.

*Associate Professor Medicine/Cardiology, Duke University Medical Center
Director, Static & Continuous ECG Core Laboratory, Duke Clinical Research Institute*



NorthEast Monitoring, Inc.
advancing Holter technology™

HE/LX[®] (Holter) Analysis Software

- ◆ **Enhanced AFib Analysis**
New AFib analysis allows for quicker AF beat detection and events. (Pro and Enhanced Plus only.)
- ◆ **Four software levels: Basic, Enhanced, Enhanced Plus and Pro**
- ◆ **Up to 14-day analysis**
Never miss a beat. Let the software sort and categorize thousands of beats. Consolidate or split the data from multi-day studies along your preferred boundaries. Trends, averages, totals, tables, etc., automatically adjusted.
- ◆ **User-friendly editing / GUI (Graphical User Interface)**
Quickly create specific reports and scanning criteria for specific clients with configuration management tools. Customized reports match your needs, e.g., contact information, diagnostic terms, morphological terms, key phrases, logos, and more.
- ◆ **Customizable criteria & reports**
Natural drag 'n drop motif provides an easy, intuitive graphical user interface. HE/LX[®] (helix) Analysis software switches rapidly to the right context -- from beat, strip, page, trend or full disclosure; all are just one click away.
- ◆ **Flexible Licensing Options**
Supports local office networks (LANs) and remote, satellite offices (WAN transmit/receive). Supports perpetual, multi-user and PPU (pay-per-use) licensing options.
- ◆ **LX Remote and DR300 Wireless capabilities**
- ◆ **Fastest and most accurate time-to-report**
 - *EQD - Enhanced QRS Detection plus proprietary algorithms means a higher percentage of automatically and correctly characterized beats.*
 - *ATC - Adaptive Template Construction fits a series of templates to a wide range of cardiac morphologies, reducing the need for manual intervention.*
 - *Compact db structure - An optimized and efficient database structure that does not compromise accuracy simply means faster download times to HE/LX[®] (helix) Analysis software.*
 - *CMA - Coefficient Matching Algorithms run faster than other products and take less time to reanalyze the data.*
 - *ASTAT - Automatic ST segment Analysis Tool sets markers, measures the ST segment on all channels, plots the average and baseline values, highlights events with computer-assisted event selection.*
 - *Spectral analysis -- Reveals critical diagnostic information not easily recognized in the time domain.*
 - *12-lead display -- When 12-lead data are available, they can be fully displayed. This includes 3D plots and detailed ST/QT measurements with software calipers.*
 - *Full disclosure -- Provides this display for a variety of reports and reimbursements as well as clinical studies.*
 - *Synchronized SpO₂ or SpO₂ and airflow -- With the Oximetry option, see the relationship between blood O₂ levels, airflow and Holter cardiac data. Quickly separate cardiac and pulmonary issues or recommend further lab work, e.g., full sleep study.*
 - *SCCB - Software Controlled Channel Blocking can block any channel(s) in the display to eliminate artifact that obscures good data.*
- ◆ **Import data from non-NEMon Holters**
Use the best Holter analysis software from the company that started it all. The industry standard HE/LX (helix) Analysis software has a unique interface allows rapid integration of new recorder types.
- ◆ **Industry-leading 3-year warranty**

Distributed by:

510(k)K930564, K081861

NB: In the U.S.A., Federal Law restricts devices to sale by or on the order of a physician. Not for in vitro diagnostic use. Not intended to replace real-time telemetry monitoring for patients suspected of having life-threatening arrhythmias.

September 2018



NorthEast Monitoring, Inc.

141 Parker Street, Suite 200
Maynard, MA 01754 USA
www.nemon.com

phone: [+1] 978-461-3992
fax: [+1] 978-461-5991
toll free USA: 866-346-5837
email: info@nemon.com



CE
0413

Benefits

- ◆ Multi-day studies
- ◆ Multi-day billings
- ◆ Enhanced AFib analysis
- ◆ Never miss-a-beat
- ◆ Runs on newest hardware & software

Key Features

- ◆ 14-Day Holter Studies Fully Supported
- ◆ 4 software levels to choose from
- ◆ Windows 7™ and 10™ compatible*
- ◆ Flexible licensing options

*Windows is a registered trademark of Microsoft Corporation

Availability

- ◆ Updates included under warranty
- ◆ Extended warranty and support available