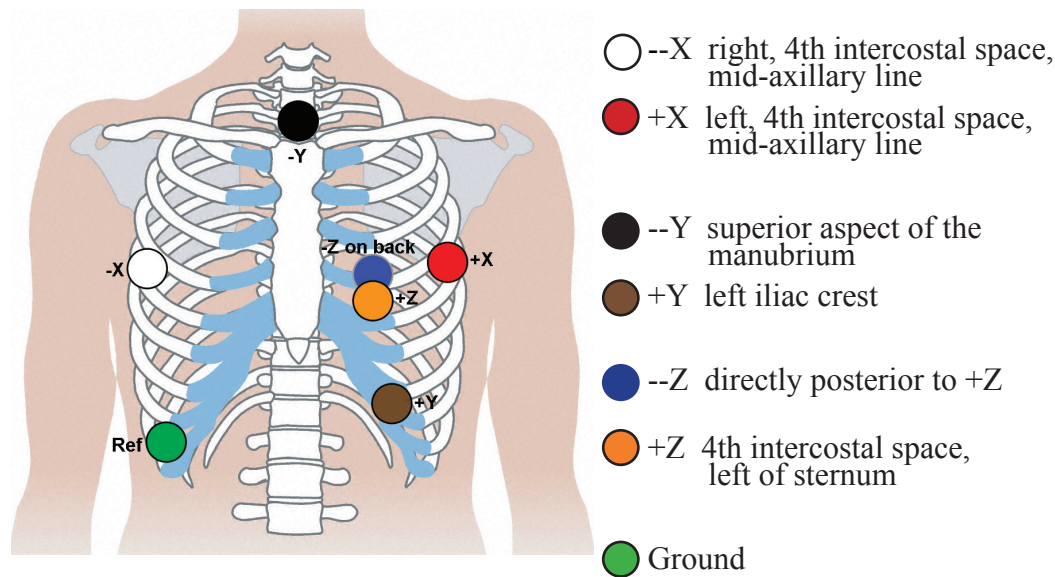


DR181 Hook-Up Guide for LX SAECG

The NEMon LX SAECG software (based on Predictor) is required for analysis.

7-Electrode, SAECG hook-up X-Y-Z Orthogonal

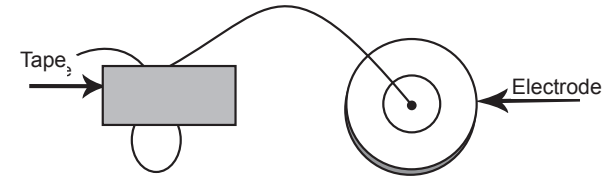


For information on purchasing the optional LX SAECG software (based on Predictor), contact NEMon as per below.

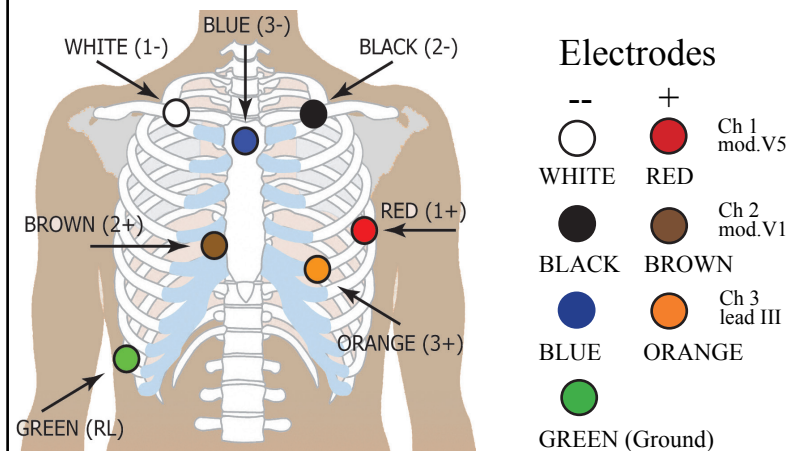
For installation and technical support on the LX SAECG software, contact Arrhythmia Research Technology, Inc. at www.arthrt.com

Patient Preparation

- Where appropriate, select area over bone, avoiding muscle areas and breast tissue.
- Clean electrode sites aggressively with alcohol and use a razor to remove hair.
- Abrade electrode sites with a scrub pad or gauze. Allow sites to dry before applying electrodes.
- Firmly snap electrodes to the lead wires.
- Apply electrodes to appropriate sites. Press adhesive border firmly for consistent adhesion.
- To help alleviate tension, loop and tape lead wires down.



7-Electrode, 3-Channel



NorthEast Monitoring, Inc.

141 Parker Street, Suite 111
 Maynard, MA 01754 USA
www.nemon.com

phone: [+1] 978-461-3992
 fax: [+1] 978-461-5991
 toll free USA: 866-346-5837
 email: info@nemon.com



NEMM039 - Rev-B - January 2016

DR181 Quick-Start Guide for LX SAECG Holter

TO RECORD SAECG AND HOLTER

1. Attach 7-lead cable to recorder and hook-up the patient as shown for SAECG (X-Y-Z orthogonal).
2. Insert a formatted SD card and 2 AA batteries into the recorder. Erase SD Card memory if prompted to do so. The screen will display date, time, battery strength, "DR181", software version and "NorthEast Monitoring". Press Next to continue to main menu.
3. Ensure that the General Setting > Recording Type is set to "SAECG" and that the SAECG Setting is set to the amount of time in minutes you choose to record SAECG - high-resolution microvolt.
4. When settings are correct, go back to the main menu by pressing the Prev (Previous) button.
5. Press New Patient to verify or enter Patient ID. At least one character must be entered for Patient ID. Press Next when finished entering Patient ID.
6. You will now see lead quality for 3 channels. Lead quality, or impedance, should be 4 or 5 for best results. Adjust leads if required.
7. With your patient resting quietly, press Record to start recording SAECG. Have the patient remain for the allotted SAECG Setting time.
8. When SAECG recording is complete, reposition leads to the conventional 7-lead Holter configuration and continue as you would with a conventional Holter recording.

AFTER RECORDING

The media card is removed, and loaded onto the Holter LX Analysis system. Before analysis takes place, choose the "SAECG" configuration that has been provided with the software from the drop-down list of Type of Reports/Analysis drop-down menu.

After Holter Analysis is complete, return to the Patient Information window and press the LX SAECG button. This will export the X-Y-Z (orthogonal) data to the LX SAECG software for SAECG / LP analysis.

Open the LX SAECG software and click on File > Open > Offline SAECG. Open the Raw Data directory and click on the file that has been saved to get started.

SETTINGS

Time and Date - Toggle between Date and Time in the lower right-hand section of screen

Language - Choose from multiple languages

Display - Choose between Normal and Inverted displays

Lock Settings - Locks all settings on the recorder

Contrast - Adjusts LCD screen contrast

General Settings

Resolution - Choose between High and Normal resolution

Mark Diaries - Choose whether to denote diary entries on ECG with a 6-cycle square wave

Record Type - Select SAECG.

SAECG Setting - Choose the length of time you want to do high-resolution microvolt recording.



MediMark Eruope, SARL
11 rue Emile Zola
BP 2332
F-38033 Grenoble CEDEX 2
France



Copyright 2012 - 2016

Northeast Monitoring, Inc.

NEMM039 - Rev-B - January 2016