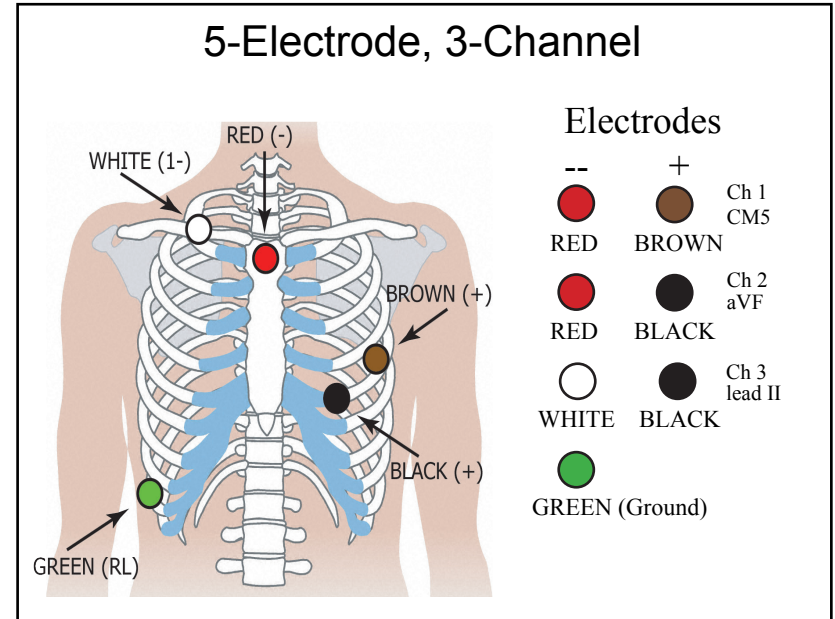
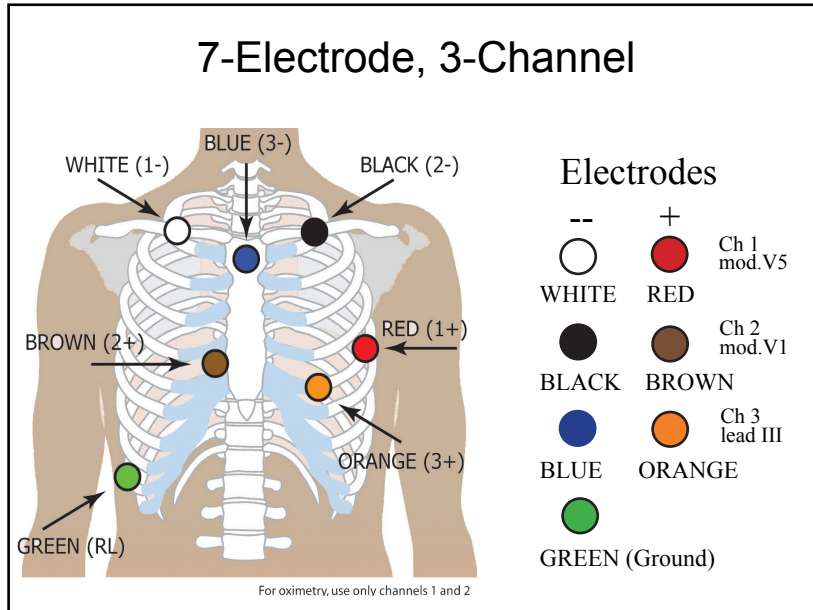
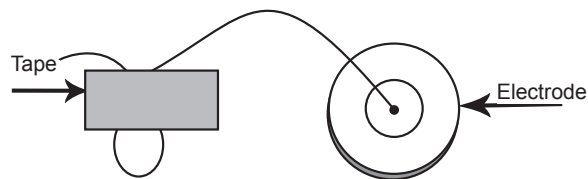


DR181 Hook-Up Guide for Holter

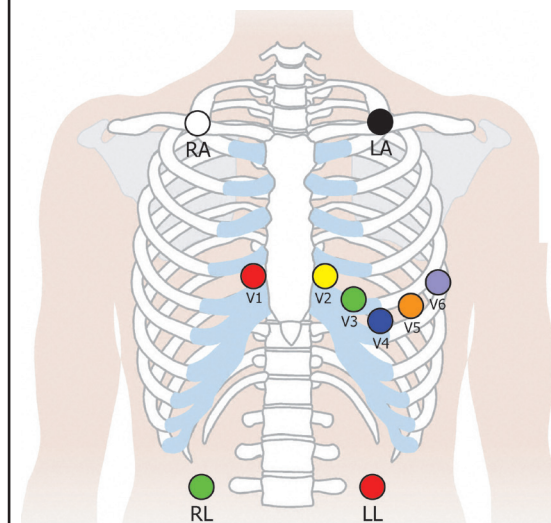


Patient Preparation

- Select area over bone, where appropriate, avoiding muscle areas and breast tissue.
- Clean electrode sites aggressively with alcohol and use a razor to remove hair.
- Abrade electrode sites with a scrub pad or gauze. Allow sites to dry before applying electrodes.
- Firmly snap electrodes to the lead wires.
- Apply electrodes to appropriate sites. Press adhesive border firmly for consistent adhesion.
- To help alleviate tension, loop and tape lead wires down.



10-Electrode, 12-Lead



- RA right mid-clavicular
- LA left mid-clavicular
- RL right iliac crest
- LL left iliac crest
- V1 4th intercostal space, right of sternum
- V2 4th intercostal space, left of sternum
- V3 between V2 and V4
- V4 5th intercostal space, mid-clavicular line
- V5 5th intercostal space, anterior axillary line
- V6 5th intercostal space, mid-axillary line

Precordial Leads		Holter Leads	
V1	V2	Ch 1	Ch 2
V3	V4	RA	V5
V5	V6	LA	V1
		Ch 3	V1
		LA	V1



NorthEast Monitoring, Inc.

141 Parker Street, Suite 111
Maynard, MA 01754 USA
www.nemon.com

phone: [+1] 978-461-3992
fax: [+1] 978-461-5991
toll free USA: 866-346-5837
email: info@nemon.com



NEMM033 - Rev-C - English - January 2016

DR181 Quick-Start Guide for Holter



MESSAGES:

Battery LOW or FAILURE - Replace both batteries before starting recorder.

Erase SD Card? YES/NO - If the SD card has been used for a previous patient, you will need to erase now. If the card should not be erased as it has ECG data that you do not want to lose, you will need to remove it and put in another formatted SD card.

SD card is full - Recording has stopped because memory is full.

SD Card errors - SD Cards must be formatted using your HE/LX Analysis software. Also, the SD Card must have a flash.dat file on it to record. Refer to your HE/LX Analysis Operator's Manual for details on SD Card errors and how to format the card.

TO START RECORDING:

1. Attach cable to recorder and then hook-up the patient as shown on reverse.
2. Insert a formatted SD card and 2 AA batteries into the recorder. Erase SD Card memory if prompted to do so. The screen will display date, time, battery strength, "DR181", software version and "NorthEast Monitoring". Press Next to continue to main menu.
3. If desired, adjust settings by pressing the button on the keypad. In Settings, press More to see additional setting options.
4. When settings are correct, go back to the main menu by pressing the Prev (Previous) button.
5. Press New Patient screen to verify or enter Patient ID. At least one character must be entered for Patient ID. Press Next when finished entering Patient ID.
6. You will now see lead quality for 3 channels. Lead quality, or impedance, should be 4 or 5 for best results. Adjust leads if required.
7. Press Record to start recording. (For 12-Lead, press Next to see all four screens of lead quality.)

AFTER RECORDING:

To remove card after recording, gently push inward to release. Never pull card out of slot, as it may damage the recorder.

NOTE: If you want to record a new patient and less than an hour has gone by since you finished your last, the recorder may try to continue recording. You can interrupt the 5 second countdown by pressing the 5-left hand buttons starting at the top. Erase the SD Card and you can now record a new patient.

SETTINGS:

Time and Date - Toggle between Date and Time in the lower right-hand section of screen

Language - Choose from multiple languages

Display - Choose between Normal and Inverted displays

Lock Settings - Locks all settings on the recorder

Contrast - Adjusts LCD screen contrast

General Settings

Resolution - Choose between High and Normal resolution

Mark Diaries - Choose whether to denote diary entries on ECG with a 6-cycle square wave

Record Type - Choose between 3-channel and Oximetry. 12-Lead and SAEKG are optional.

12-Lead Settings

Interval - How often an interval is saved. Number denotes seconds between saves

Length - Length of 12-Lead strip that is saved

Sample Rate - Choose between 720 and 1440 samples per second



MediMark Europe, SARL
11 rue Emile Zola
BP 2332
F-38033 Grenoble CEDEX 2
France

