

NorthEast Monitoring, Inc.

advancing Holter technology™

Product Line

DR180 Series
3-Channel
OxyHolter®
12-lead



DR200 Series
2- or 3-lead Event
w / auto-trigger
Holter and Event
with "Both" mode



DR300 Series
Bluetooth/mobile
technology



DR300 Gateway



**HE/LX® (helix)
Analysis
Software**



LX Remote



**LX® Sleep
Software for
AHI / OSA**



**LX® Event
Software**

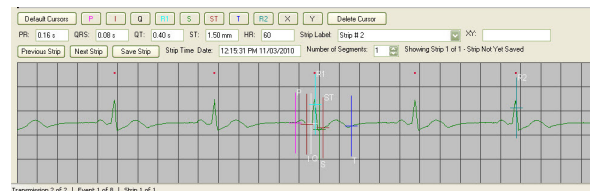


**Industry-leading
3-year warranty**

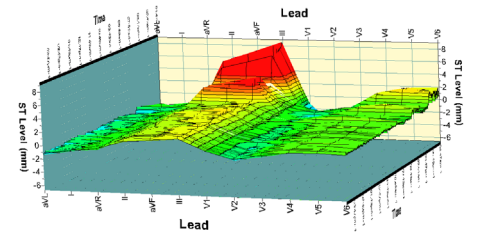
NorthEast Monitoring is a medical electronics and software company that develops high quality, rugged products to address diagnostic, clinical and research needs in cardiology, respiratory, and pulmonary applications. Our products accurately capture, efficiently store and quickly analyze critical high quality, real-time data. Our software tools use powerful digital signal processing algorithms and an intuitive user interface to enable rapid manipulation, display, storage and reporting of data.



The product line is the result of steady refinement and application of new technology in the field of ambulatory measurement. Since 1970, the founders of the company (and creators of the original "Holter for Windows™") have constantly brought innovative thinking, creative vision and the latest technology to the ambulatory measurement products on which the company is based. This steady, evolutionary approach has served our customers well by providing them with products that add functionality generation after generation, operate well within their specifications and simply last longer.



All units are rugged and built to last, and the software puts the user first. Each comes with the industry's best warranty of 3 years, along with optional extensions for 5 or more years. Choose the best unit for your application -- the "tried and true" DR180 Series with many lead options and optional oximetry, or the DR200 Series with its innovative Event, Holter, long-term Holter or BOTH modes, or the new DR300 Series system with Bluetooth and cellular technology for NRT (near-real-time) Event plus Holter.



Field	Value	Field	Value	Field	Value
PR	0.16 s	QRS	0.08 s	QT	0.40 s
ST	1.50 mm	HR	60	Strip Label	Strip # 2
Previous Strip		Next Strip		Save Strip	
Strip Time	12:15:31 PM 11/03/2010	Number of Segments	1	Showing Strip 1 of 1 - Strip Not Yet Saved	

A number of key features make these recorders and software the quality and technology leaders in the industry today. Contact NorthEast or read on for more details about our products. At NorthEast Monitoring, we are always "advancing Holter technology."

Brief Product Description

For complete product descriptions, please see the appropriate Product Data Sheet.

◆ DR181 Digital Holter Recorder, 3CH (5- or 7-lead)

The DR181 3CH (3 channel) comes in 5- or 7-lead configuration. It is designed with the following three goals in mind: ease-of-use for the patient and clinician, accuracy of the data, and durability of the unit.

◆ DR181 Digital Holter Recorder, 12-lead

The DR181 in a 12-lead configuration provides a high-quality research and clinical evaluation tool. It records 12-lead / 9 channels of data -- no short-cuts! This 12-lead system does not use arithmetically derived or reconstructed data from non-standard Holter lead hook-ups.

◆ DR181 OxyHolter®, Holter and Oximetry Recorder

The OxyHolter® is unique in the industry. It represents a quantum step in your ability to quickly isolate (or correlate) cardiac and pulmonary issues. With synchronized sets of data -- one set of cardiac data (standard Holter) and one set of pulmonary data (saturated O2 levels via pulse oximetry) conveniently obtained via the DR181 and NorthEast's proprietary OxyHolter® cable -- the system helps to determine the need for further tests and/or root causes of many pathologies.

◆ DR200/E and DR200/E-a "Tel-a-heart™" Event Recorder, 2- or 3-lead

30 days with 1 AA battery, auto-trigger-on-event, diaries, symptoms, 90 minutes of event data, audio compression for TTM, SD card data transfer are but a few of the features in this versatile Event recorder. Often replaces obsolete "King of Hearts".

◆ DR200/HE Holter and Event Recorder, 3-, 5- or 7-lead Holter and 2- or 3-lead Event

The DR200/HE is a single unit Holter plus Event recorder. Deploy to a patient in either mode or in the innovative BOTH mode. Long-term Holter (14-days) or 30-days Event on a single AA battery. Gives the doctor's office and other service providers a simple approach to maintain sufficient inventory of two different products when the optimum number of each may be unpredictable.

◆ DR300 Series

A game-changer in terms of cost/feature. All the functionality of the DR200 plus Bluetooth. Adds deployment options (to those available with the DR200) of MCT with near-real-time Event transmission via cellular mobile network (requires Gateway).

◆ DR300 Gateway

Place this unit in a convenient spot the patient will come in proximity to it frequently and the Gateway will receive captured and stored ECG from the Bluetooth-enabled DR300 recorder. Then it is automatically forwarded via cellular mobile network to the monitoring / analysis station. Requires subscription data plan. Patient compliance for Event monitoring - done!

◆ HE/LX® (helix) Analysis

A new architecture, new feature in HE/LX with more to come. New level of functionality links LX Event to the full Holter record in HE/LX. Perpetual, timed and PPU (pay-per-use) licensing. Methods for easily importing non-NEMon recordings easily added to interface. Embedded license software and a new HASP key eliminate concerns with "pushed" Java updates. Sortable patient record files, enhanced archive functions, and multi-user db locking mechanisms are only a few of the many enhancements that define this latest offering.

◆ LX® REMOTE

An enabling piece of web-based technology for many of NEMon's products. LX REMOTE moves data between a remote site and a central analysis site. For example, consider a cardiology practice with multiple offices for patients to visit but a centralized analysis facility, or a scanning service with client doctors' offices all over the world. Designed to provide HIPAA-compliant, secure, digital methods to move ECG data from the remote location to the analysis location and then return the pdf report files back to the remote location. Developed to make management and deployment as easy as possible. No need to load software applications or plug in hardware (USB) keys at remote sites. A cost saving for scanning services and other multi-location service providers.

◆ LX® Sleep Software for AHI / OSA

Utilizing a proprietary algorithm for combining ECG, SpO2, optional airflow and derived respiratory information... collected via OxyHolter, LX Sleep provides the most inexpensive, convenient, at-home, multi-parameter, unattended sleep analysis to diagnose OSA and provide an accurate AHI. Suitable for CPAP prescription.

◆ LX® Event Software

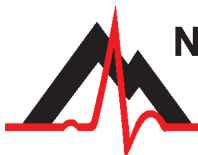
The LX® Event Software raises the standards of convenience and flexibility for handling ECG data from looping event recorders and near-real-time transmissions from MCT recorders like the DR300. LX Event is compatible with event recorders from other manufacturers but offers special advantages when used with NEMon recorders such as the DR300/200 Series. Input data to LX Event via SD card, TTM, or near-real-time transmission with DR300 with Bluetooth plus Gateway.

Windows is a registered trademark of the Microsoft Corporation in the USA and other countries.

HE/LX® (helix) Software

NB: In the U.S.A., Federal Law restricts devices to sale by or on the order of a physician. For in vitro diagnostic use. Not intended to replace real-time telemetry monitoring for patients suspected of having life-threatening arrhythmias.

September 2016



advancing Holter technology

NorthEast Monitoring, Inc.

141 Parker Street, Suite 111
Maynard, MA 01754 USA

www.nemon.com

phone: [+1] 978-461-3992

fax: [+1] 978-461-5991

toll free USA: 866-346-5837

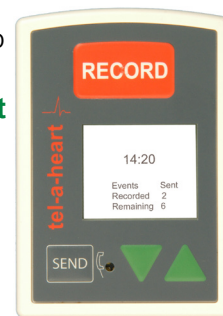
email: info@nemon.com



0413



DR180 Series



DR200 Series



DR300 Series

