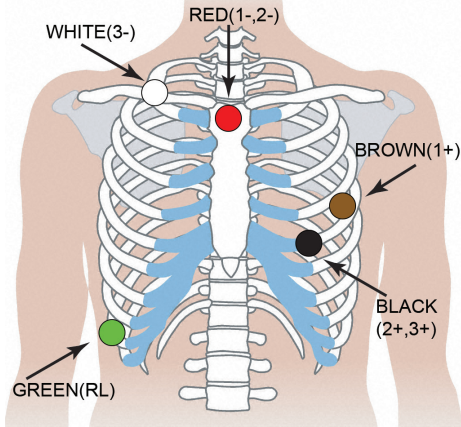


DR200/HE & DR300 Hook-Up Guide for Holter

5-Electrode Placement

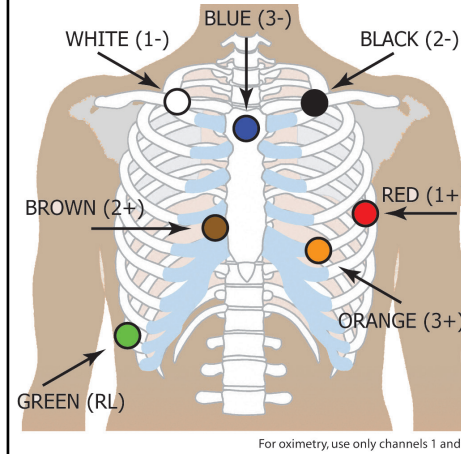


Electrodes		
--	+	
RED	BROWN	Ch. 1 CM5
RED	BLACK	Ch. 2 aVF
WHITE	BLACK	Ch. 3 lead II
GREEN		GREEN (Ground)



TO GET TO MAIN MENU:
 • Remove and reinsert battery.
 • If 15- second countdown begins, interrupt by pressing ENTER, ∇ , \blacktriangle , and EVENT buttons, in that order.

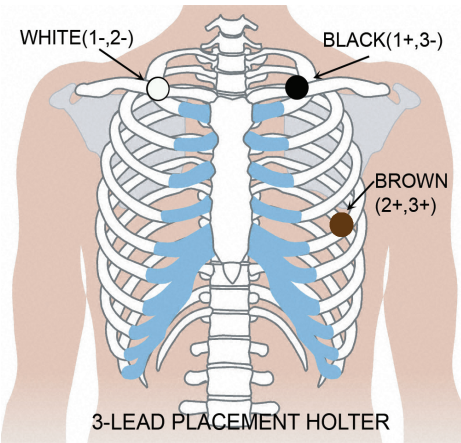
7-Electrode Placement



Electrodes		
--	+	
WHITE	RED	Ch. 1 mod.V5
BLACK	BROWN	Ch. 2 mod.V1
BLUE	ORANGE	Ch. 3 lead III
GREEN		GREEN (Ground)

For oximetry, use only channels 1 and 2

3-Electrode Placement

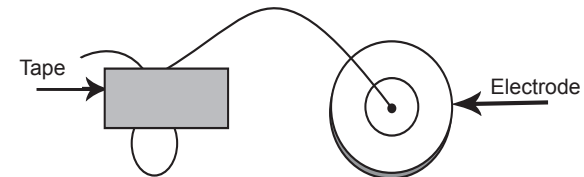


Electrodes		
--	+	
WHITE	BLACK	Ch. 1 lead I
WHITE	BROWN	Ch. 2 mod. V5
BLACK	BROWN	Ch. 3 mod. III

3-LEAD PLACEMENT HOLTER

Patient Preparation

- Select area over bone, avoiding muscle areas and breast tissue.
- Clean electrode sites aggressively with alcohol and use a razor to remove hair.
- Abrade electrode sites with a scrub pad or gauze. Allow sites to dry before applying electrodes.
- Firmly snap electrodes to the lead wires.
- Apply electrodes to appropriate sites. Press adhesive border firmly for consistent adhesion.
- To help alleviate tension, loop and tape lead wires down.



NorthEast Monitoring, Inc.

141 Parker Street, Suite 200
 Maynard, MA 01754 USA
 www.nemon.com

phone: [+1] 978-461-3992
 fax: [+1] 978-461-5991
 toll free USA: 866-346-5837
 email: info@nemon.com



MediMark Eruope, SARL
 11 rue Emile Zola
 BP 2332
 F-38033 Grenoble CEDEX 2
 France



NEMM020 - Rev-I - English

DR200/HE & DR300 Quick-Start Guide for Holter

TO START RECORDER FOR HOLTER



- Step 1** - Insert formatted SD Card and battery into recorder. Screen will display recorder model and then “NorthEast Monitoring” information. Erase memory if prompted to do so. Press ENTER to continue to main menu.
- Step 2** - Adjust Settings - If desired, adjust settings by using arrows - ▼ and ▲ - to move the cursor and the ENTER button to select. Use arrows to navigate to General Settings menu and to adjust entries. Press ENTER to select and return to menu.
- Step 3** - Enter Patient ID - From main menu go to New Patient screen to enter Patient ID. At least one character must be entered for Patient ID. Use arrows and ENTER to input ID and press EVENT when finished. (Hold down ENTER button to backspace.)
- Step 4** - Start Recorder - ECG signal and quality will appear on screen. Recorder will start automatically after 10 minutes or by pressing EVENT button for 3 seconds. The time and battery level will appear on screen when recording Holter.

To stop recording, remove the battery from recorder. To remove card after recording, gently push inward to release. Never pull card out of slot, as it may damage the recorder.

If screen displays a 15 second countdown, you can interrupt by pressing ENTER, ▼, ▲, and the EVENT button, in that order.

GENERAL SETTINGS:

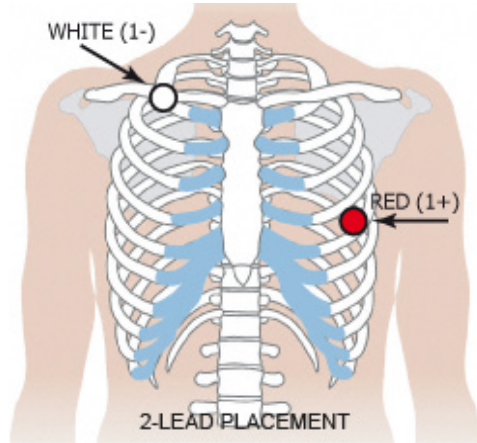
- Contrast** - Adjusts LCD screen contrast
- Lead Loose** - Enables/Disables “Lead Loose” error message
- Event Marker** - Marks event location on ECG
- Key mode** - “Quiet” turns off key beeping. “Delayed” prevents accidental events by requiring patient to hold button down for several seconds to record an event
- Rec Type** - Switch between Holter, Event or Both recording modes.
- Menu Lock** - Locks settings on the recorder:
To lock recorder enter “217”
To unlock the recorder enter “151”
- Language** - Choose from multiple languages
- Hi Res / CH** - Choose from Hi Res “ON” or 1CH, 2CH or 3CH Holter recording
- Diary** - Enable/Disable patient text diaries.
- Wireless** (DR300 only) - Enable/Disable Wireless/Bluetooth transmission

MESSAGES:

- LEAD LOOSE** – Occurs when the patient is not hooked up or if there is a problem with the hook up. The problem may be with an electrode, a lead, or the cable that connects the leads to the recorder. The message will continue to flash for about 10 seconds after corrected. When corrected, the ECG, then Time-of-day will appear on the screen. If you choose, you can turn this error message off via the main menu.
- Battery LOW** or **FAILURE**– Put in new battery before starting recorder.
- Erase memory YES/NO** - If the SD card has been used for a previous patient, you will need to erase now. If the card should not be erased as it has ECG data that you do not want to lose, you will need to remove it and put in a new formatted SD card.
- SD Card errors** - **SD Cards must be formatted using your Holter software.** Refer to your Operator’s Manual for details on SD Card errors and how to format and correct.

DR200/HE & DR300 Hook-Up Guide for Event

2-Electrode Placement



Channel 1

- RED - 5th rib, left anterior axillary line
- WHITE - Right mid-clavicular



TO START RECORDER FOR EVENT

Step 1 - Remove old battery and insert new alkaline or NIMH battery. Replace battery cover.

Step 2 - 15-second countdown will appear on Screen.

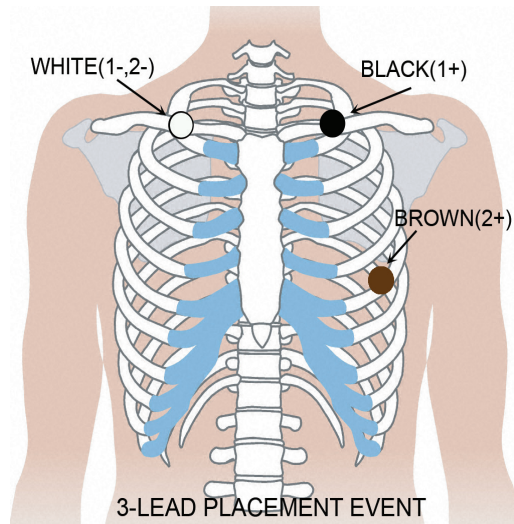
Step 3 - Erase any "Sent" events by pressing either green arrow for 3 seconds. Adjust settings at this time. (See back for more information.)

Step 4 - Hook-up patient and recording starts after 15 seconds - when time-of-day and event count appears on screen.

To stop recording, remove the battery from recorder by inserting a blunt object (for example pen, coin) in the space between the battery and the top edge of the recorder and press gently. Battery should pop out.

For further instructions, see Quick-Start Guide on back or refer to Operator's Manual.

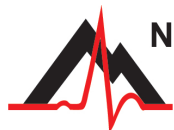
3-Electrode Placement



- BLACK - Left mid-clavicular
- WHITE - Right mid-clavicular
- BROWN - 5th rib, left anterior axillary line

Electrodes

- | | | | |
|-------|---|----|---------|
| | + | -- | |
| ch.1 | ● | ○ | lead 1 |
| ch. 2 | ● | ○ | mod. V5 |



NorthEast Monitoring, Inc.

141 Parker Street, Suite 200
Maynard, MA 01754 USA
www.nemon.com

phone: [+1] 978-461-3992
fax: [+1] 978-461-5991
toll free USA: 866-346-5837
email: info@nemon.com



MediMark Eruope, SARL
11 rue Emile Zola
BP 2332
F-38033 Grenoble CEDEX 2
France



IP22

advancing Holter technology

NEMM017 - Rev-K - English

DR200/HE & DR300 Quick-Start Guide for Event

TO GET TO MAIN MENU:

- Remove and reinsert battery.
- If 15- second countdown begins, interrupt by pressing ENTER, ▼, ▲, and EVENT buttons, in that order.
- You will see “NorthEast Monitoring” on LCD screen.
- Press ENTER to continue to Main Menu.

TO ADJUST EVENT SETTINGS:

Use the arrows - ▼ or ▲ - to move the cursor or increase/decrease values, and the ENTER button to select menus and ENTER, to update:

Pre Event Sec – seconds saved before event

Post Event Sec – seconds saved after event

Max Events – Maximum events saved before transmit required. If set to 0, recorder will provide real-time transmissions only.

Channels – 1 or 2 channel recording

Send Settings – To adjust send speed and volume

Call Message - Event message and sounds can be turned on/off

After adjusting settings, move cursor to “Return” on top line and press ENTER to return to previous menus and to start the recorder.

TO ADJUST AUTO-DETECT SETTINGS:

Use the arrows - ▼ or ▲ - to move the cursor or increase/decrease values, and the ENTER button to select menus and ENTER, to update:

Auto Detect - Turn on/off automatic event detection

AF Detect - Turn on/off Atrial Fibrillation detection and adjust AF Peak HR (60-120) minimum

Brady Limit - Adjust Brady Heart Rate (20-100) maximum

Tachy Limit - Adjust Tachy Heart Rate (50-300) minimum

Pause Limit - Set Pause Length in seconds (2.0-10.0)

Separation - Adjust minimum minutes (2-20) between same type of events. For AF, 2-90 minutes.

After adjusting settings, move cursor to “Return” on top line and press ENTER to begin recorder.

DR300 WIRELESS OPTION:

See the DR300 Recorder and Socket manuals for more information on setting up and using the wireless feature.

Some key points:

- The Socket program must be installed on desktop.
- The DR300 must have correct URLs, be paired with the Gateway and tested prior to leaving the office.
- Under the General Settings, Wireless must be turned “On”.
- The Socket program must be running for transmission to occur.



TO TRANSMIT, STORE OR ERASE EVENTS:

To transmit or send events, press ENTER button.

To save events to an SD Card for the LX Event Software - Remove battery and insert formatted SD card so name of card is aimed down and is facing towards you. Re-insert battery and “COPYING EVENTS” message and then “FINISHED REMOVE CARD” will appear on screen.

To remove card after recording, gently push inward to release. Never pull card out of slot, as it may damage the recorder.

To erase “Sent” events, press either green arrow - ▼ or ▲ - for 3 seconds. You will then see “ERASING MEMORY” on the LCD screen and the event count will reset.

ERROR MESSAGES:

LEAD LOOSE – Occurs when the patient is not hooked up or if there is a problem with the hook up. The problem may be with an electrode, a lead, or the cable that connects the leads to the recorder. The message will continue to flash for about 10 seconds after corrected. If you choose, you can turn this error message off via the main menu.

Battery LOW – Recorder is still recording, but battery is running low. Battery should be replaced as soon as possible.

Battery FAILURE – Recording has stopped.